A street lamp on the left side of the frame casts a bright, circular glow of light onto the dark blue sky. The light illuminates the text 'that you may believe', which is arranged in four lines and centered within the beam of light. The words 'that', 'you', and 'may' are in a dark, serif font, while 'believe' is in a white, serif font.

that
you
may
believe

THE SEASONS OF THE CHRISTIAN CALENDAR

WE ARE HERE

CYCLE OF LIGHT

GOD with us

Advent: Anticipation
Christmas: Incarnation
Epiphany: Revelation

CYCLE OF LIFE

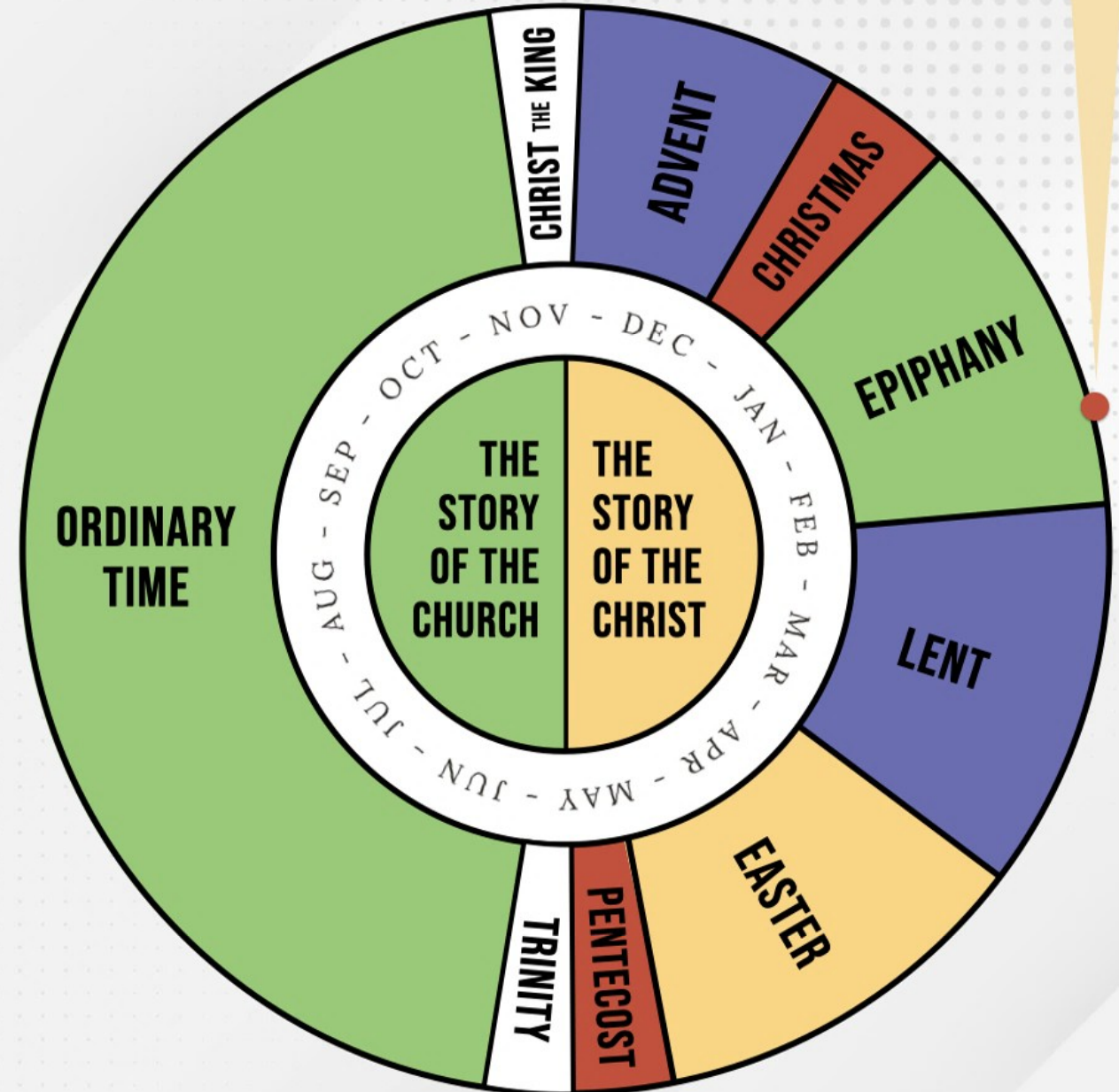
GOD for us


Lent: Crucifixion
Easter: Resurrection
Pentecost: Ascension

CYCLE OF LOVE

GOD in us

Trinity: Magnification
Ordinary Time: Mission
Christ the King: Conclusion



A street lamp on the left side of the frame casts a bright, circular glow of light onto the sky. The light illuminates the text 'that you may believe', which is arranged in four lines and centered within the beam of light. The background is a clear, deep blue sky. The lamp itself is a simple black pole with a horizontal arm holding a rectangular light fixture.

that
you
may
believe

A.I. hallucinations refer to a phenomenon in which artificial intelligence systems, particularly large language models (LLMs) like those powering chatbots, generate information that is plausible-sounding but factually incorrect, misleading, or completely made up.

Why do LLMs *hallucinate*?

- Pattern-Matching Machines
- Lack Comprehensive Understanding
 - Incentivized for Deception

Complete this pattern:

La, la, la, la, la

Complete this pattern:

La, la, la, la, la

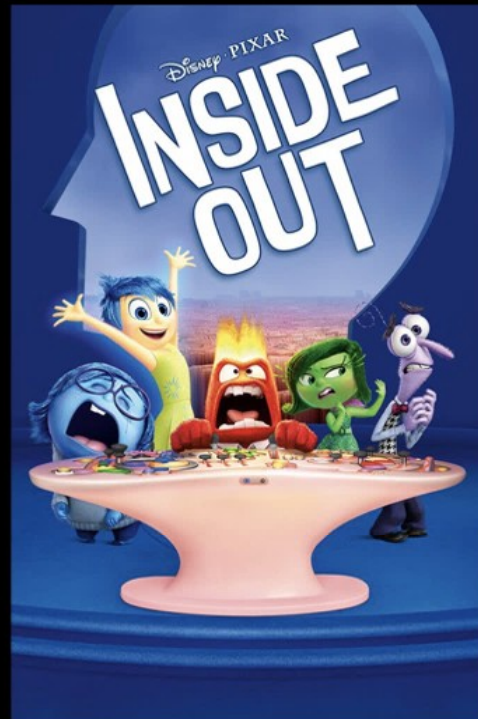
La, la, la, la, la Bamba

Complete this pattern:

La, la, la, la, la

~~La, la, la, la, la~~ Bamba

Para bailar la Bamba




Why do LLMs *hallucinate?*

- Pattern-Matching
Machines
- Lack Comprehensive
Understanding
- Incentivized
for Deception

Why do humans *become partisan?*

- Meaning-Making
Beings
- Lack Universal
Understanding
- Designed for
Community

A street lamp on the left side of the frame casts a bright, circular glow of light onto the sky. The light illuminates the text 'that you may believe', which is arranged in four lines and centered within the beam of light. The background is a clear, deep blue sky. The lamp itself is a dark, modern design with a single arm extending from a vertical pole.

that
you
may
believe

JOHN 9:1-12

As he went along, he saw a man blind from birth. His disciples asked him, “Rabbi, who sinned, this man or his parents, that he was born blind?”

“Neither this man nor his parents sinned,” said Jesus, “but this happened so that the works of God might be displayed in him. As long as it is day, we must do the works of him who sent me.”

JOHN 9:1-12

“Night is coming, when no one can work. While I am in the world, I am the light of the world.”

After saying this, he spit on the ground, made some mud with the saliva, and put it on the man's eyes. “Go,” he told him, “wash in the Pool of Siloam” (this word means “Sent”). So the man went and washed, and came home seeing.

JOHN 9:1-12

His neighbors and those who had formerly seen him begging asked, “Isn’t this the same man who used to sit and beg?” Some claimed that he was.

Others said, “No, he only looks like him.”

But he himself insisted, “I am the man.”


“How then were your eyes opened?” they asked.

JOHN 9:1-12

He replied, “The man they call Jesus made some mud and put it on my eyes. He told me to go to Siloam and wash. So I went and washed, and then I could see.”

“Where is this man?” they asked him.

“I don’t know,” he said.

A street lamp on the left side of the frame casts a bright, circular glow of light onto the sky. The light is a pale yellow-white, contrasting with the deep blue background. The words 'that you may believe' are positioned within this illuminated area. 'that', 'you', and 'may' are in a dark, serif font, while 'believe' is in a larger, white, serif font.

that
you
may
believe

JOHN 9:13-23

They brought to the Pharisees the man who had been blind. Now the day on which Jesus had made the mud and opened the man's eyes was a Sabbath. Therefore the Pharisees also asked him how he had received his sight. "He put mud on my eyes," the man replied, "and I washed, and now I see."

JOHN 9:13-23

Some of the Pharisees said, “This man is not from God, for he does not keep the Sabbath.”

But others asked, “How can a sinner perform such signs?” So they were divided.

Then they turned again to the blind man, “What have you to say about him? It was your eyes he opened.”

JOHN 9:13-23


The man replied, “He is a prophet.”

They still did not believe that he had been blind and had received his sight until they sent for the man’s parents. “Is this your son?” they asked. “Is this the one you say was born blind? How is it that now he can see?”

“We know he is our son,” the parents answered,
“and we know he was born blind.”

JOHN 9:13-23

“But how he can see now, or who opened his eyes, we don’t know. Ask him. He is of age; he will speak for himself.” His parents said this because they were afraid of the Jewish leaders, who already had decided that anyone who acknowledged that Jesus was the Messiah would be put out of the synagogue. That was why his parents said, “He is of age; ask him.”

A street lamp on the left side of the frame casts a bright, circular glow of light onto the dark blue sky. The light illuminates the text 'that you may believe', which is arranged in four lines and centered within the beam of light. The words 'that', 'you', and 'may' are in a dark, serif font, while 'believe' is in a larger, white, serif font.

that
you
may
believe

JOHN 9:24-34

A second time they summoned the man who had been blind. “Give glory to God by telling the truth,” they said. “We know this man is a sinner.”

He replied, “Whether he is a sinner or not, I don’t know. One thing I do know. I was blind but now I see!”

Then they asked him, “What did he do to you?
How did he open your eyes?”

JOHN 9:24-34


He answered, “I have told you already and you did not listen. Why do you want to hear it again? Do you want to become his disciples too?”

Then they hurled insults at him and said, “You are this fellow’s disciple! We are disciples of Moses! We know that God spoke to Moses, but as for this fellow, we don’t even know where he comes from.”

JOHN 9:24-34

The man answered, “Now that is remarkable! You don’t know where he comes from, yet he opened my eyes. We know that God does not listen to sinners. He listens to the godly person who does his will. Nobody has ever heard of opening the eyes of a man born blind. If this man were not from God, he could do nothing.”

To this they replied, “You were steeped in sin at birth; how dare you lecture us!” And they threw him out.

A street lamp on the left side of the frame casts a bright, circular glow of light onto the dark blue sky. The light illuminates the text 'that you may believe', which is arranged in four lines and centered within the beam of light. The words 'that', 'you', and 'may' are in a dark, serif font, while 'believe' is in a white, serif font.

that
you
may
believe

JOHN 9:35-41

Jesus heard that they had thrown him out, and when he found him, he said, “Do you believe in the Son of Man?”

“Who is he, sir?” the man asked. “Tell me so that I may believe in him.”

Jesus said, “You have now seen him; in fact, he is the one speaking with you.”

JOHN 9:35-41


Then the man said, “Lord, I believe,”
and he worshiped him.

Jesus said, “For judgment I have come
into this world, so that the blind will see
and those who see will become blind.”

JOHN 9:35-41

Some Pharisees who were with him heard him say this and asked, “What? Are we blind too?”

Jesus said, “If you were blind, you would not be guilty of sin; but now that you claim you can see, your guilt remains.”

A street lamp on the left side of the frame casts a bright, circular glow of light onto the dark blue sky. The light illuminates the text 'that you may believe', which is arranged in four lines and centered within the beam of light. The words 'that', 'you', and 'may' are in a dark, serif font, while the word 'believe' is in a larger, white, serif font.

that
you
may
believe

WHAT IS THE SIGNIFICANCE OF THE SIGN?

*Unanswered questions are of more value
than unquestioned answers.*

WHAT IS THE SIGNIFICANCE OF THE SIGN?

Unanswered questions are of more value
than unquestioned answers.


*Until our fear of exclusion is healed by the light of Christ,
we will continue to hallucinate and think we are right.*

WHAT IS THE SIGNIFICANCE OF THE SIGN?

Unanswered questions are of more value
than unquestioned answers.

Until our fear of exclusion is healed by the light of Christ,
we will continue to hallucinate and think we are right.

*In our struggle for understanding, we can know that
we've found the truth when it leads us to worship Jesus.*

A street lamp on the left side of the frame casts a bright, circular glow of light onto the dark blue sky. The light illuminates the text 'that you may believe', which is arranged in four lines and centered within the beam of light. The words 'that', 'you', and 'may' are in a dark, serif font, while 'believe' is in a white, serif font.

that
you
may
believe